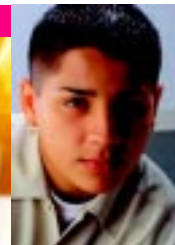




A Reference Guide to Your Network of Care Web Site



Service Directory

For information about specific services, search the Service Directory, which has contact information for mental health and supportive services provided by schools, clinics, hospitals, research foundations, and other community-based organizations.

Library

Through a groundbreaking partnership with Healthwise Inc., Network of Care is able to offer unbiased, evidence-based information on more than 4,000 health topics in our Library. Find helpful, fresh information on health conditions, medical tests and procedures, medications, and everyday health and wellness issues in this world-class resource.

Legislate

Use our amazing bill-tracking section to follow state and federal legislation, receive e-mail alerts and communicate directly with lawmakers before they vote.



Links

The hunt is over – we’ve rounded up the Web sites for the government programs and nonprofit organizations that specialize in mental health issues. Just one click, and you’re there.

Insurance

Learn about health coverage available in your community with one-click access to health plans, insurance carriers and a variety of low-cost insurance programs.

Support & Advocacy

Find out about organizations that provide valuable support to individuals and families living with mental illness, as well as present a strong voice of advocacy with the treatment community, public and private bureaucracy and public policy makers.



My Folder

My Folder is a private, secure place to keep important information about your health care, community support services, and more.

News

Current headlines affect you. Every day, we bring you the top state and national news about mental health issues, public policy and more.

For Providers

Service providers can share challenges and ideas here. Agencies can use our private message boards, create their own Web sites and much more.

Emergency Services

With one click, this section gives you crisis information and referrals for children, adolescents and adults.

Stark County Network of Care

The Stark County Community Mental Health Board worked in partnership with the Stark County Family Council to develop the Stark County Network of Care, an Internet-based resource for up-to-date information related to mental health, children and families. The Ohio Department of Mental Health selected Stark County as one of three Ohio pilot programs and provided start-up funding.

The Network of Care for Mental Health is a comprehensive, Internet-based community resource for people with mental illness, as well as their caregivers and service providers. It also offers vital information about diagnoses, insurance and advocacy, as well as daily news from around the world concerning mental health. This unique, one-stop information tool enables you to find pertinent mental health Web sites, keep personal records, and communicate directly with elected officials to make your voice heard in the legislative halls.



The Network of Care for Children & Families is a "No Wrong Door" online information place for the individuals, families and agencies involved with children and youth ages 0-18. This online community provides critical information, communication and advocacy tools with a single point of entry. This site can greatly assist families in finding the best services for their children, from insurance coverage to local services.

For additional information, please contact:

**Stark County Community
Mental Health Board**
(330) 455-6644
Email: info@starkmhb.org
Website: www.starkmhb.org

Stark County Family Council
(330) 455-1225
Email: FCinfo@starkfamilycouncil.org
Website: www.starkfamilycouncil.org

Trilogy Integrated Resources is the company that developed the Network of Care Web Sites, www.networkofcare.org.

Trilogy Integrated Resources LLC is a company dedicated to improving information and communication in the health and social service fields at the community level. Trilogy works primarily with state and county governments and other local human service entities to establish one-stop information places, centered on highly interactive, community-based Web sites. Trilogy's efforts in creating these "virtual communities" ultimately focus on two things:

- 1) Arming consumers and their families with access to comprehensive information, advocacy and other resources to empower them to make the best, most informed decisions possible regarding needed care in their lives.**
- 2) Enabling the service delivery community - public and private - to better deal with the problems of fragmentation through the use of extremely effective tools. These tools better coordinate their efforts to get the right service to the right person at the right time.**

Stark County Network of Care

is an Internet-based resource for up-to-date information related to mental health, children and families. This user friendly Web site provides quick access to a Service Directory, a Library of over 4,000 health topics, support and advocacy information, links to resources, and much more.



<http://stark.oh.networkofcare.org>